



**elèa**  
residence









## THE STORY

The olive tree has always been the eternal symbol of Cyprus – a living emblem of peace, prosperity, and timeless resilience. For generations, its roots have anchored families, traditions, and communities, weaving nature into everyday life.

Inspired by this enduring heritage, Elea Residence is surrounded by more than 400 olive trees, creating a landscape where history and modern living coexist in harmony. Here, nature is not a backdrop but a presence – ever near, ever nurturing.

For centuries, Cypriot families gathered around the olive press, where olive oil was more than sustenance. It was light in the darkness, medicine for healing, and a sacred gift – celebrated as a blessing of life. Elea Residence carries forward this spirit, reimagined as a sanctuary of well-being and balance, where family, culture, and nature find their place together.

Here, contemporary living blends seamlessly with Mediterranean tradition. A community rooted in heritage, yet flourishing with modern elegance, Elea Residence is more than a home – it is a story written in nature's embrace.





# CYPRUS

At the crossroads of three continents – Europe, Asia, and Africa – Cyprus is a Mediterranean island where East meets West, and history meets modern living. With a heritage stretching back over 9,000 years, Cyprus is one of the world’s oldest civilizations, celebrated for its culture, warmth, and natural beauty.

Blessed with around 320 days of sunshine each year, a dramatic coastline, and unspoiled landscapes, the island is often described as an earthly paradise. Beyond its beauty, Cyprus offers all the essentials of modern living – world-class infrastructure, excellent healthcare, and an education system aligned with European standards.

As a proud member of the European Union since 2004, Cyprus combines a favorable taxation system with stability, making it attractive both for families seeking quality of life and for investors looking for security and opportunity.



EUROPE







## THE PLACE

Nestled on the peaceful outskirts of Paphos, the village of Anarita offers a serene setting among olive groves – a place where the genuine Cypriot spirit lives on, yet always within effortless reach of the vibrant city. Here, life is not only quiet and charming; it is deeply connected to a landscape woven with history, culture, and natural wonder.

Just a short drive away lies Paphos – a city of timeless treasures. Once the ancient capital and birthplace of Aphrodite, Paphos is today a UNESCO World Heritage site and a former European Capital of Culture. From the Tombs of the Kings and Dionysos mosaics to the bustling harbor and lively cultural scene, the city blends ancient tradition with a modern spirit of renewal.

Venture inland and the scenery shifts to the cool forests and crystal waterfalls of the Troodos Mountains. Among timeless mountain villages and sacred monasteries such as Kykkos, nature reveals another side of Cyprus – authentic, spiritual, and enduring.

Elea Residence is at the heart of it all – a place where the richness of heritage and the beauty of nature create a setting unlike any other.



## THE AREA

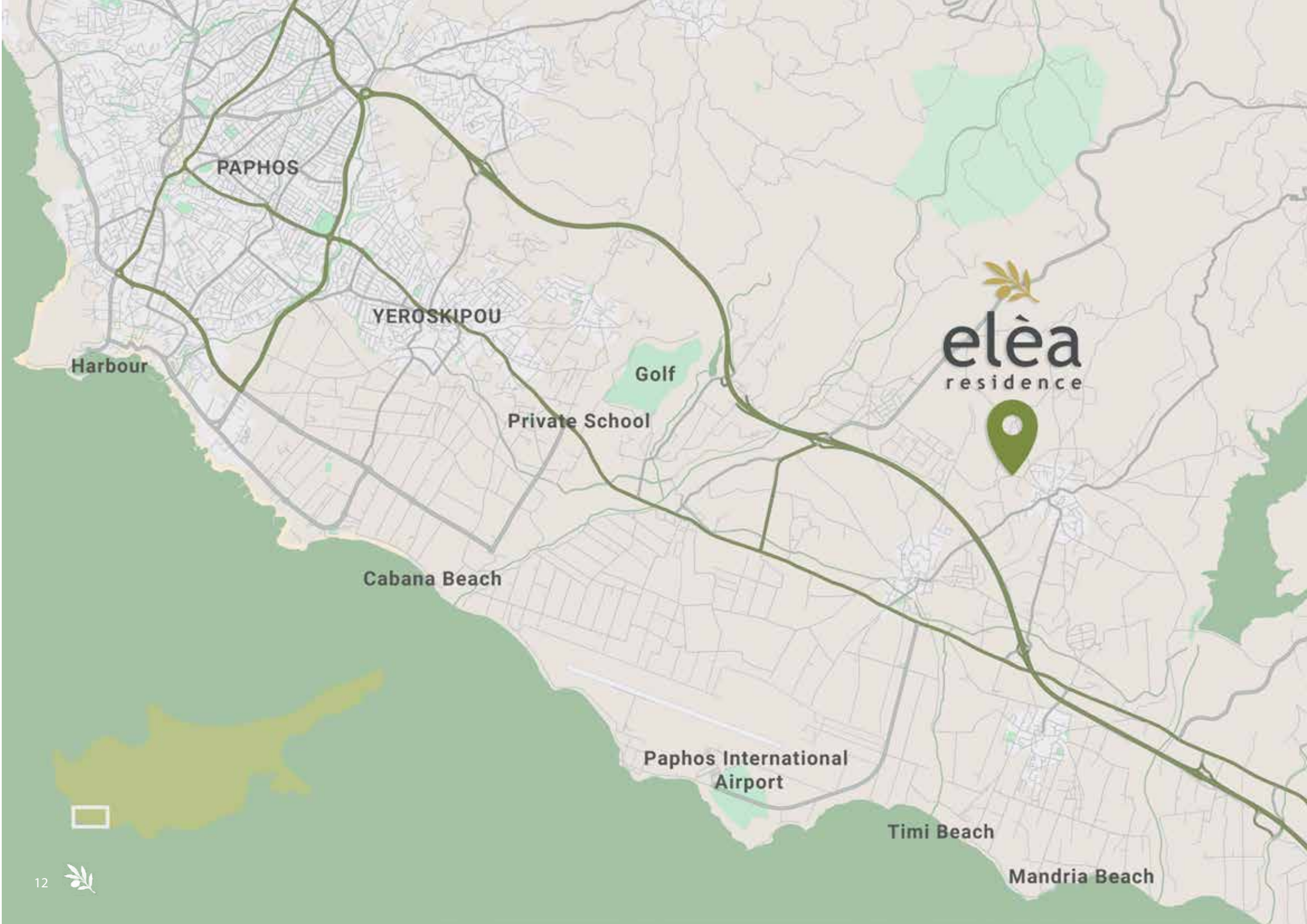
Anarita is a picturesque village on the tranquil outskirts of Paphos, embraced by olive groves and rolling hills. It offers a way of life that is calm yet connected – a place where stone houses, village squares, and traditional tavernas create a warm and authentic Cypriot atmosphere.

In recent years, Anarita has flourished into a modern yet timeless residential haven. Its proximity to Paphos International Airport and the city center ensures seamless connectivity, while new dining, leisure, and infrastructure improvements enhance its appeal.

Just minutes away from golf courses, beaches, and cultural treasures, Anarita combines the authenticity of village life with the comfort and convenience of modern living – an ideal setting for those who seek both peace and accessibility.







PAPHOS

YEROSKIPOU

Harbour

Golf

Private School

  
elèa  
residence



Cabana Beach

Paphos International  
Airport

Timi Beach

Mandria Beach



# THE LOCATION



Elea Residence enjoys a serene setting embraced by nature, yet lies only minutes from everything you need. Within less than 10 minutes, you can reach golden beaches, world-class golf courses, private schools, the international airport, modern medical facilities, and a full range of shops and services.

Closer to home, the village of Anarita welcomes you with its traditional charm, local tavernas, and warm community spirit. Here, the peace of the countryside meets the convenience of quick connections — creating a lifestyle that is both tranquil and dynamic.

Perfectly positioned between the beauty of the Mediterranean coastline and the energy of Paphos, Elea Residence offers the very best of all worlds.



PAPHOS AIRPORT  
7.1 KM



MEDICAL FACILITY  
8.2 KM



GOLF  
8.3 KM



SHOPS & STORES  
3 KM



PAPHOS CENTRE  
14.2 M



BEACH  
5.4 KM



# THE PROJECT

Elea Residence is an exclusive residential community in the peaceful village of Anarita, just minutes from the vibrant city of Paphos. Surrounded by olive groves and open landscapes, it offers a tranquil retreat while remaining perfectly connected to sandy beaches, world-class golf courses, Paphos' historic old town, and the international airport.

Thoughtfully masterplanned, the community features nine elegant apartment buildings with 150 contemporary homes, set among landscaped gardens with more than 400 olive trees. Designed with both elegance and comfort in mind, residents can enjoy an exceptional lifestyle with three swimming pools, two padel courts, a fully equipped gym, and dedicated children's spaces.

Each apartment combines open-plan living with smart home integrations, spacious verandas, and panoramic views of the sea and mountains. With high-end finishes throughout, Elea Residence blends modern sophistication with Mediterranean charm — connecting you to the heart of Paphos while offering a sanctuary of serenity and style.

















# PREMIUM APARTMENTS

Elea Residence brings together modern Mediterranean living and timeless serenity. With just 150 exclusive homes, each apartment is designed as a private retreat, blending elegance, comfort, and technology.

Spacious open-plan layouts flow onto large verandas, framing panoramic views of the sea, mountains, and surrounding olive groves. Interiors are finished to the highest standards, with refined Italian materials, smart home technology, and contemporary design that balances sophistication with ease of living.

Set within landscaped gardens of more than 400 olive trees, residents enjoy access to resort-style amenities — three swimming pools, padel courts, a fitness center, and wellness spaces. At Elea Residence, every apartment is more than a home — it is a sanctuary where nature and modern luxury meet.



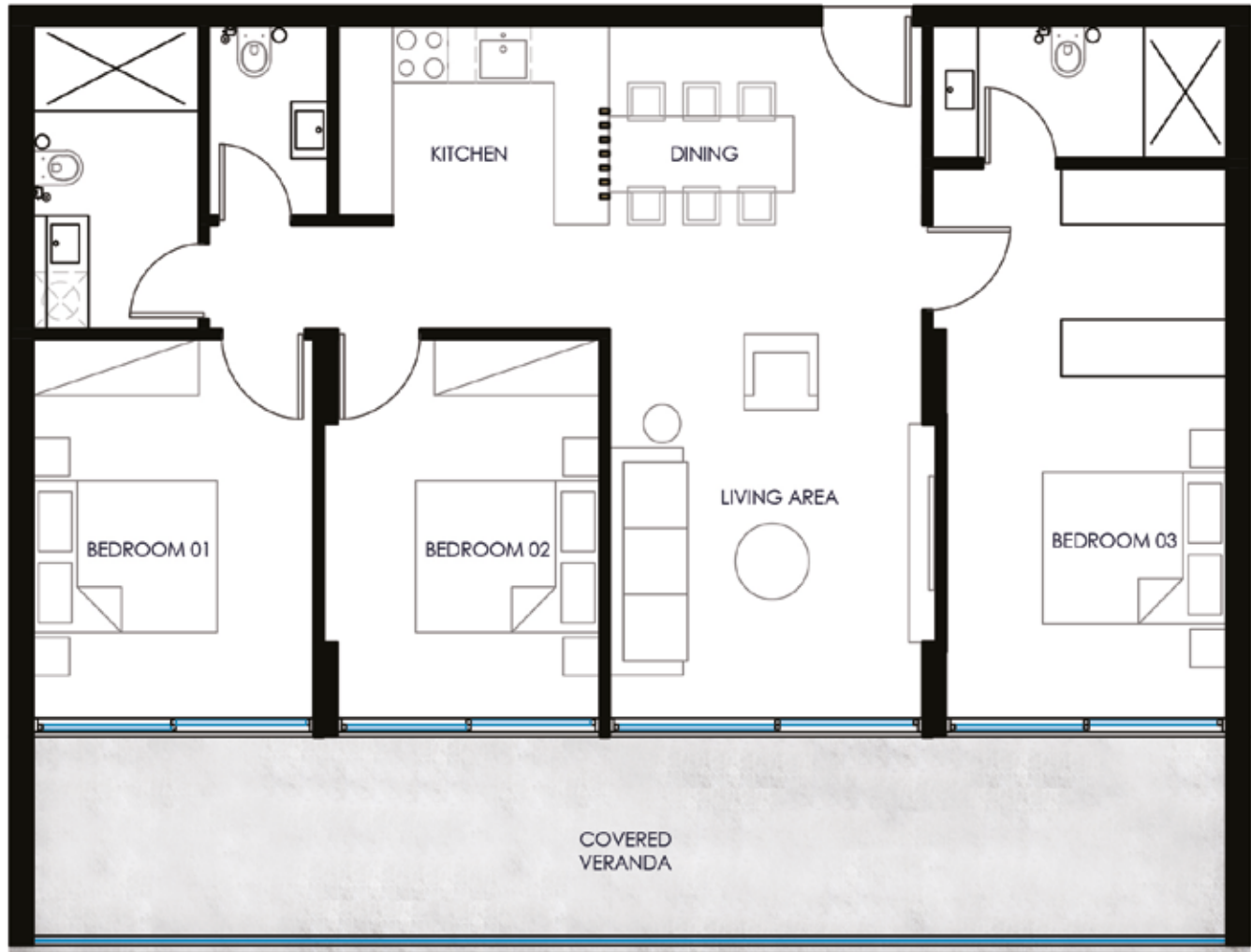


## PREMIUM APARTMENTS | 3 BEDROOM





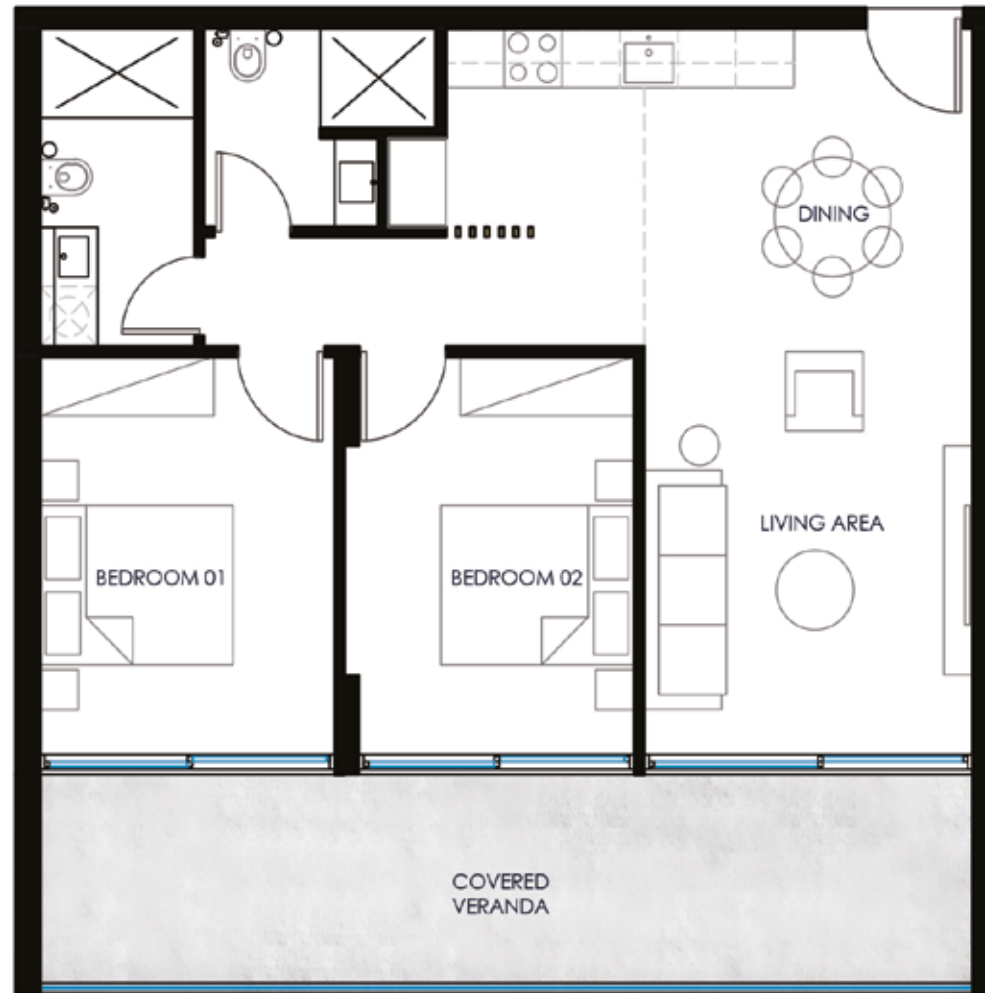






## PREMIUM APARTMENTS | 2 BEDROOM





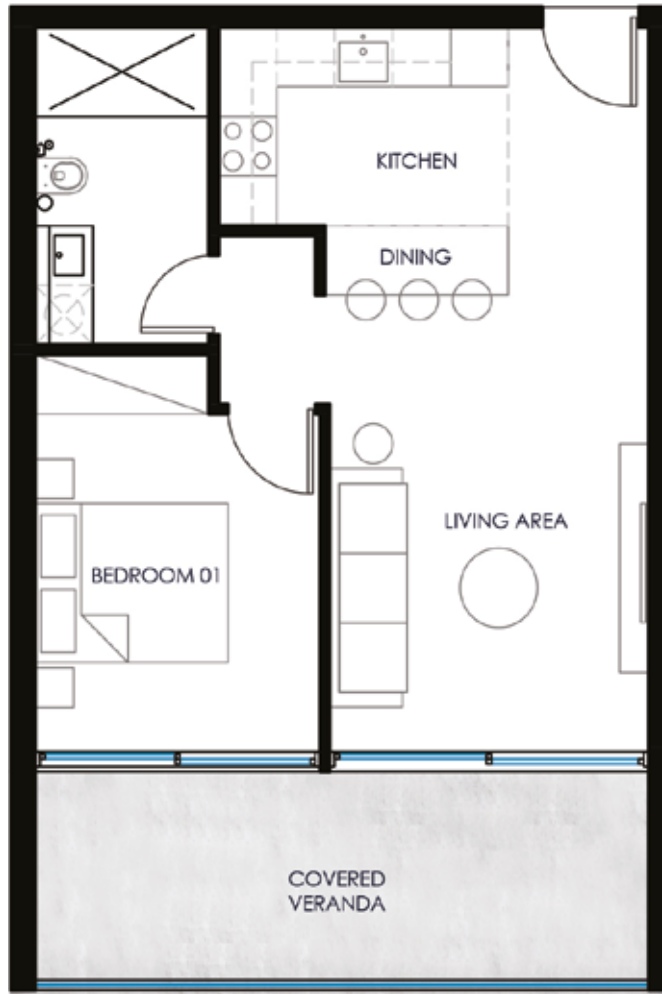


# PREMIUM APARTMENTS | 1 BEDROOM











A VISION MADE REAL.  
GROUNDED IN STILLNESS.  
MEANT FOR YOU.





