

# THE NEXT PAPHOS HOTSPOT

This serene location is often recognized as the next desirable area of Paphos, offering opportunities for an active and fulfilling lifestyle.

Residents of Luma Genesis will enjoy proximity to the Geroskipou Beach, the finest sandy beach in the Paphos area, easy access to various recreational facilities and all the amenities offered by Paphos City Centre.



# MODERN LIVING

LUMA Genesis offers an exclusive collection of 24 beautifully designed units, featuring 1 or 2-bedroom apartments.

Each unit is crafted meticulously, ensuring a blend of modern aesthetics and practical functionality. Residents will enjoy a communal pool and a playground, and each apartment comes with covered parking, AC units in every room, and electric shutters in all bedrooms.

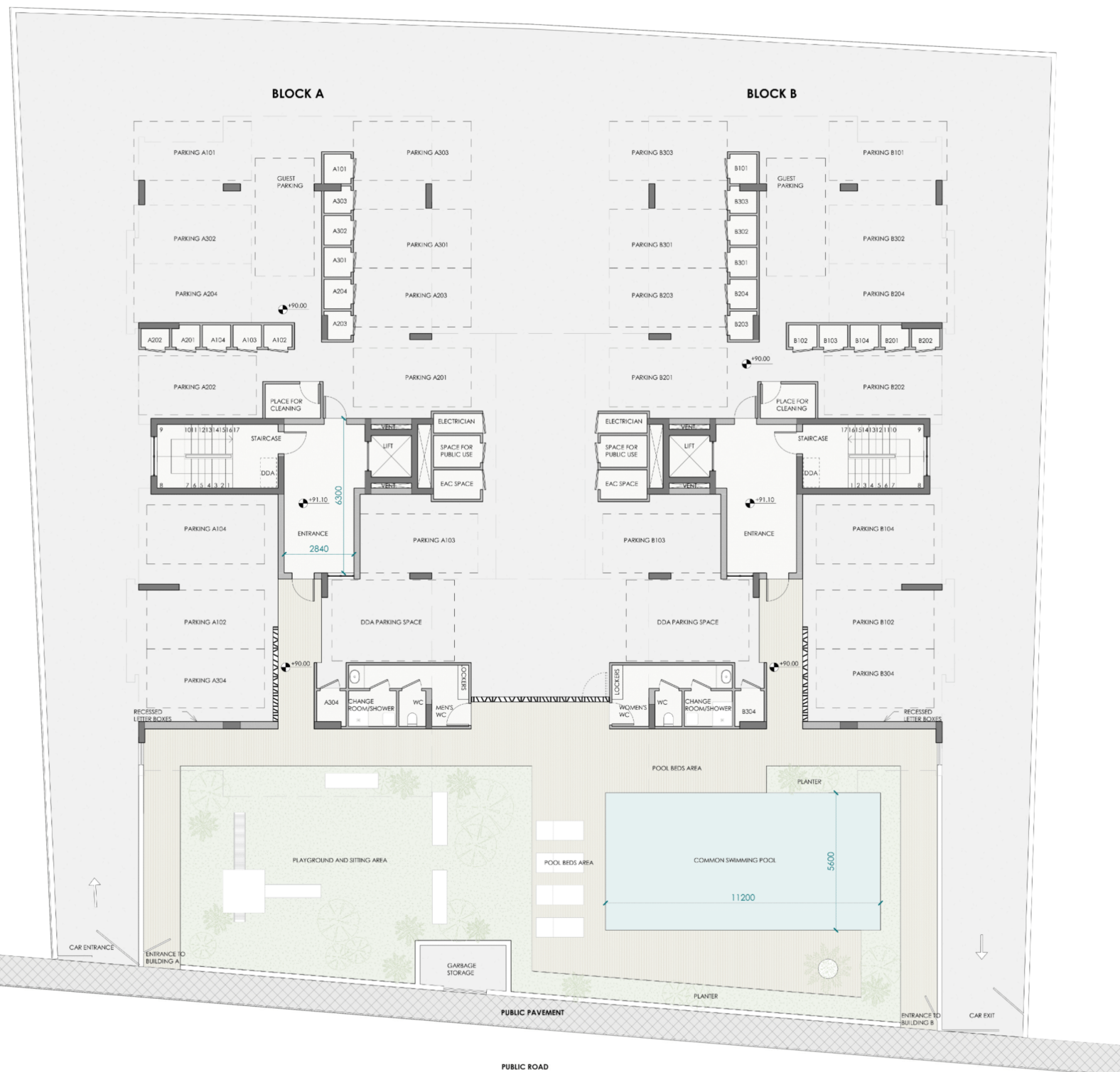








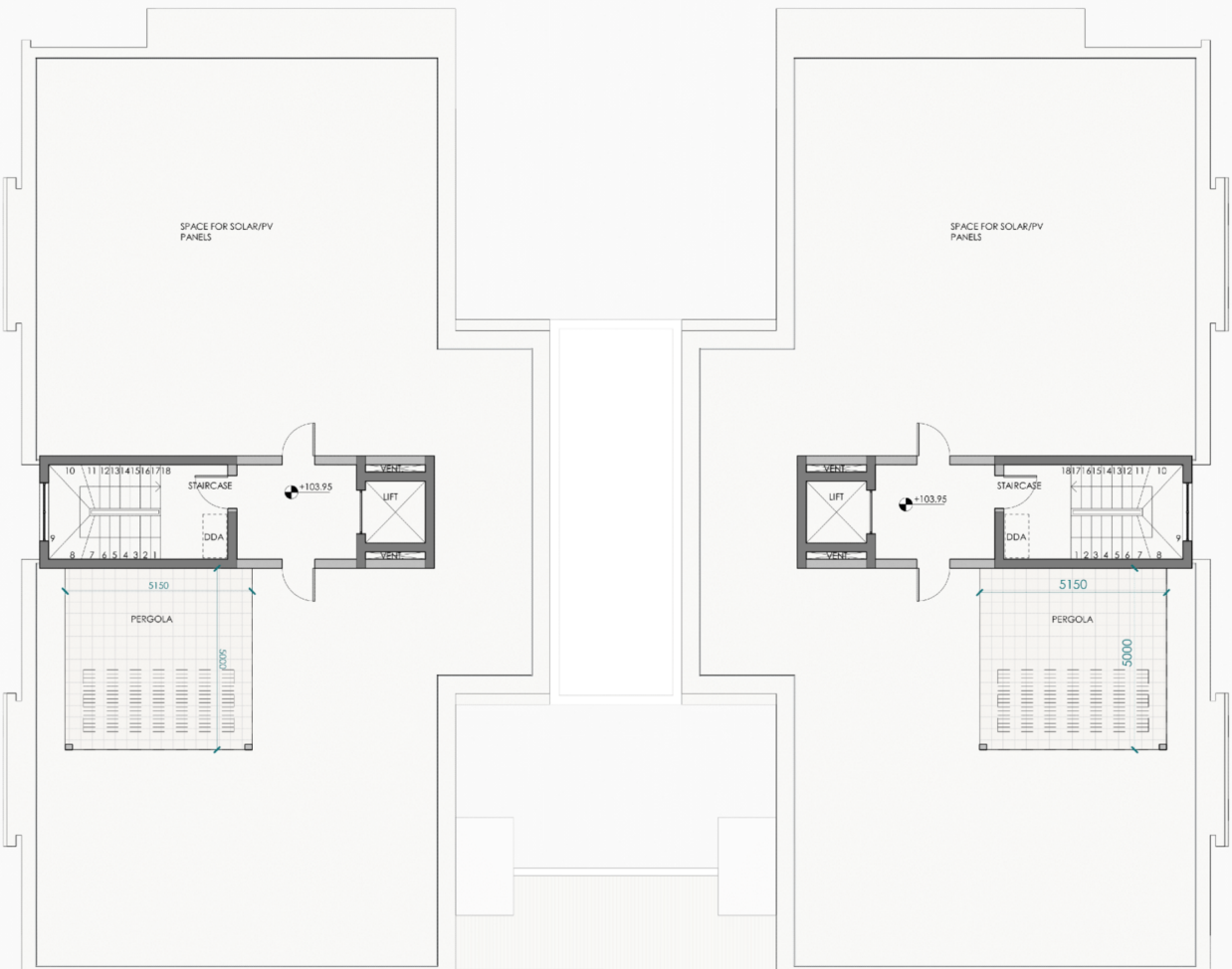
# MASTER PLAN



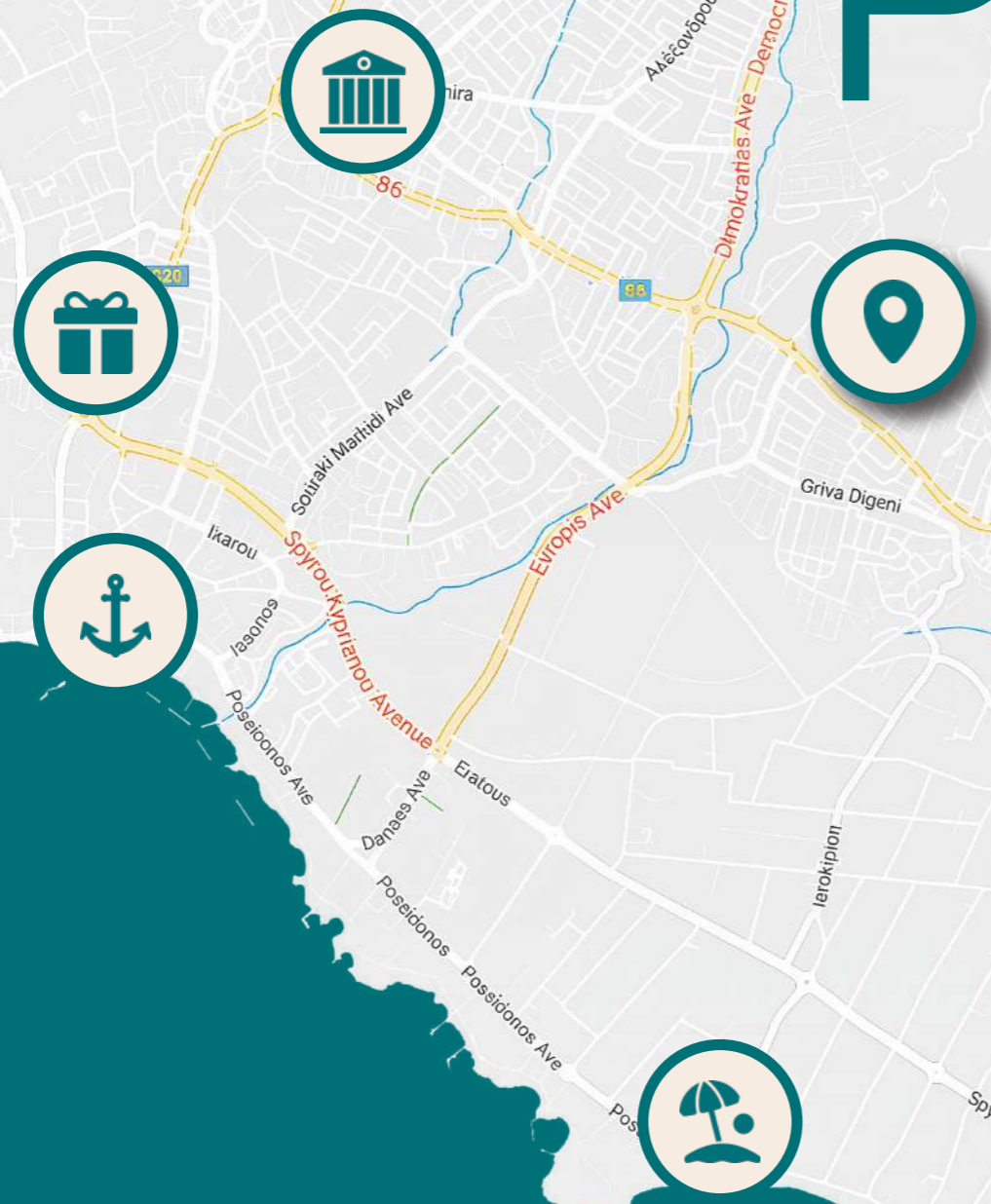
# FLOOR PLAN



# ROOF PLAN



# PERFECTLY LOCATED



- Paphos Old City – 6 min
- Geroskipou Beach – 7 min
- Kings Avenue Mall – 10 min
- Paphos Harbor – 10 min
- Paphos International Airport – 15 min







# SPECIFICATIONS

	Available Units	Total Covered Area	Bathrooms	Covered Parking
<b>1 Bedroom</b>	12	62.3m <sup>2</sup>	1	1
<b>2 Bedroom</b>	12	92.3m <sup>2</sup>	2	1



Gated Car  
Entrance



Storage  
Room



Communal  
Pool



Solar Water  
Heating System



Communal  
Rooftop



AC Units In  
Every Room



Covered  
Parking



Elevator



Cummunal  
Playground



Electric  
Shutters



Energy  
Efficiency: A



Intercom  
System

Provisions for Electric Car charging station