

Trilogy is high living in every sense, a trio of shimmering beachfront towers surrounding a bustling inner plaza, right in the heart of Limassol's affluent waterfront. This is a place to live well, work hard and play, long after the sun dips beyond the sea's horizon. Trilogy is as much an experience as it is a destination, somewhere and something that gathers people together to share everything that's great about life on our sun-kissed shore. Brought to life by a world-class collaboration of architects, designers and developers, Trilogy is a unique opportunity to play a part in the city's ever-changing story and begin an exciting new chapter of your own.

YOUR STORY BEGINS HERE

TRILOGYLIMASSOL.COM

I

LIVE

Trilogy blends the aspirational dream of high-end beachfront living, with the sophistication of urban cool, astonishing design flair as well as unsurpassed levels of finish.

- Apartments of discerning taste
- Spectacular layouts and sea views
- High standards of quality and design
- Member access to resident-only areas
- 24-hour security and concierge
- Private underground parking

II

WORK

Locating your business at Trilogy says a lot about its status and ambition. It's an epic location, a bold statement of creative spirit and geographical savvy.

- State-of-the-art office space
- Sea views from every desk
- Fast digital connectivity
- 24-hour maintenance and access control
- 24-hour security and concierge
- Private underground parking

III

PLAY

Trilogy's three distinct social areas offer resident-only facilities for secluded leisure and relaxation, as well as a lively, bustling, public space that can be enjoyed and experienced by everyone.

- Members' pool, bar, gym, spa, tennis court, garden and children's play area
- Resident-only indoor pool, fitness suite and informal relaxation areas
- Restaurants, bars and shops for all



ON THE SEAFRONT

CYPRUS

From spectacular mountain peaks to beautiful beaches and cloudless skies, Cyprus has it all. Offering everything from complete tranquility to exuberant nightlife, sporting pleasures to cultural riches, and ancient history to cutting-edge technology. As an EU member, with one of the world's most advantageous tax systems and lowest crime rates in Europe, it is the perfect location for a second home, permanent residence or sound property investment, all at the buzzing crossroad of three continents.

LIMASSOL

On the south coast of Cyprus, lies a city of diversity and urban seafront living. A hub of business, leisure and activity stretching along a 17km coastline of azure water and blue flag beaches. A safe haven for a relaxed pace of life in the island's most vibrant city. A home between mountains and sea. This is Limassol.



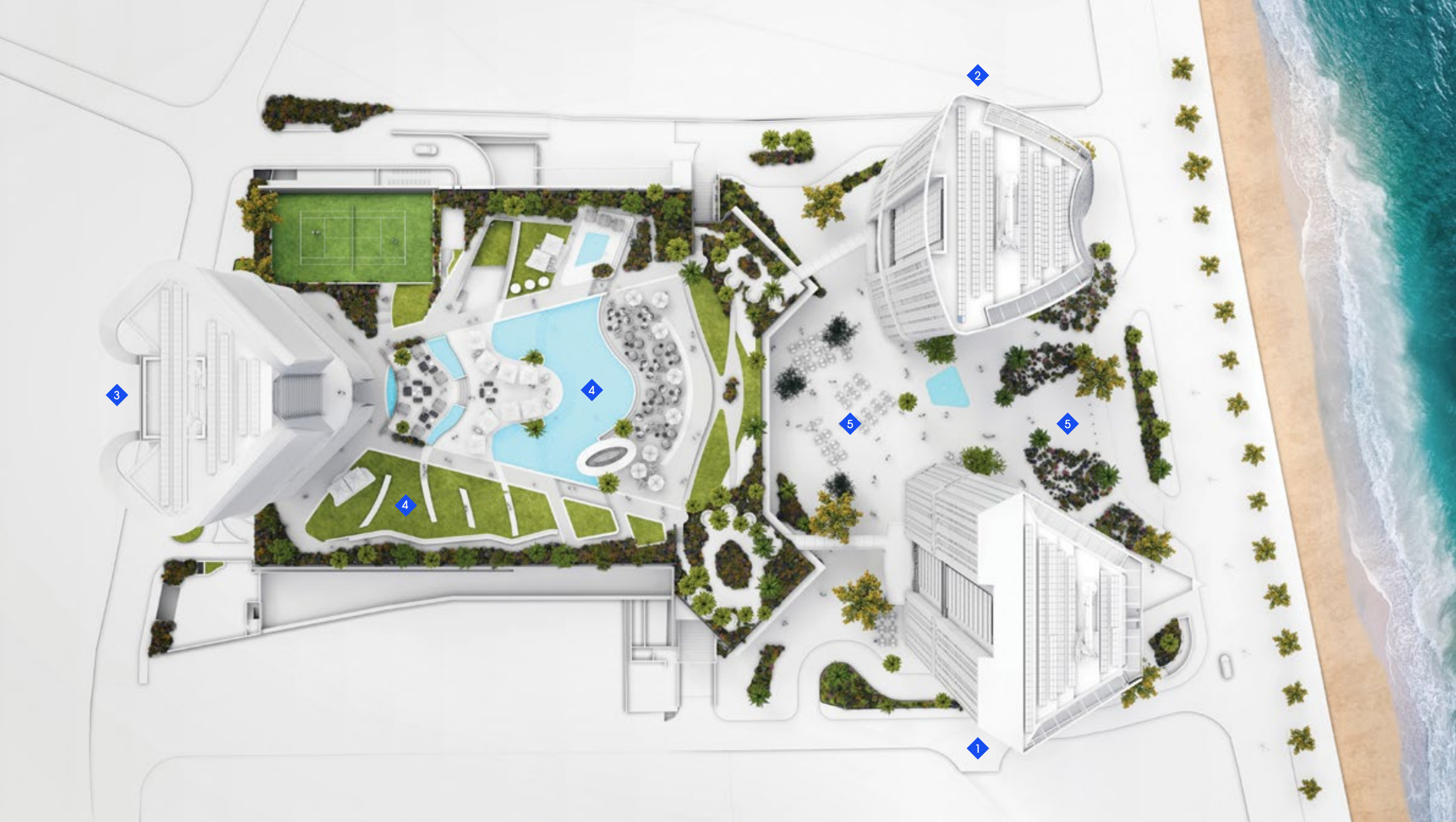
The Trilogy plot before development.



♦ *Trilogy Limassol Seafront*
341, 28TH OCTOBER AVENUE
3106 LIMASSOL, CYPRUS







MASTERPLAN

○ —→ SEAFRONT

- 1. WEST TOWER**
 – 69 apartments
 – 52 offices
 – Retreat: spa and gym

- 2. EAST TOWER**
 – 127 apartments
 – Retreat: spa and gym

- 3. NORTH TOWER**
 – 111 apartments
 – Retreat: spa and gym

- 4. PRIVATE OASIS**
 – Swimming pools
 – Pool bar
 – Tennis court
 – Children's play area
 – Landscaped gardens

- 5. PUBLIC PLAZA**
 – Restaurants
 – Cafés and bars
 – Shops



I LIVE

*“Basking in this moment of beauty, I smiled to myself
and realised this is exactly where I want to be.”*

Trilogy blends the aspirational dream of high-end beachfront living, with the sophistication of urban cool, with astonishing design flair and unsurpassed levels of finish. These are homes to be desired and coveted by many, but loved and lived in by the lucky few.

YOUR SKY-RISE HAVEN

Each residence at Trilogy is a statement of discerning taste and understated wealth. Spectacular layouts are complemented with high standards of finish and sea views enjoyed by every apartment.

TRILOGY APARTMENTS

- Apartments of discerning taste
- Spectacular layouts and sea views
- High standards of quality and design
- Member access to resident-only areas
- 24-hour security and concierge
- Private underground parking

Right: Apartment living area looking out to the sea.
Bottom: Bedroom interior with panoramic sea views.



EXQUISITE QUALITY

Trilogy offers a range of apartment types and sizes with direct views of the sea, ensuring there is a home for every taste. The remarkable coastal location, and architecture's exceptional vision, allow residents to enjoy beachfront living in a serene and relaxed environment. The apartment layouts lend themselves to a timeless lifestyle with flowing design, spacious living areas and carefully selected natural materials and finishes.

Large terraces extend the living room and main bedrooms, to celebrate the alfresco outdoor space of the undeniably enviable Cyprus climate. Three dedicated elevators, security, concierge, controlled access and a first-class parking facility come together to provide complete peace of mind and privacy.

WEST

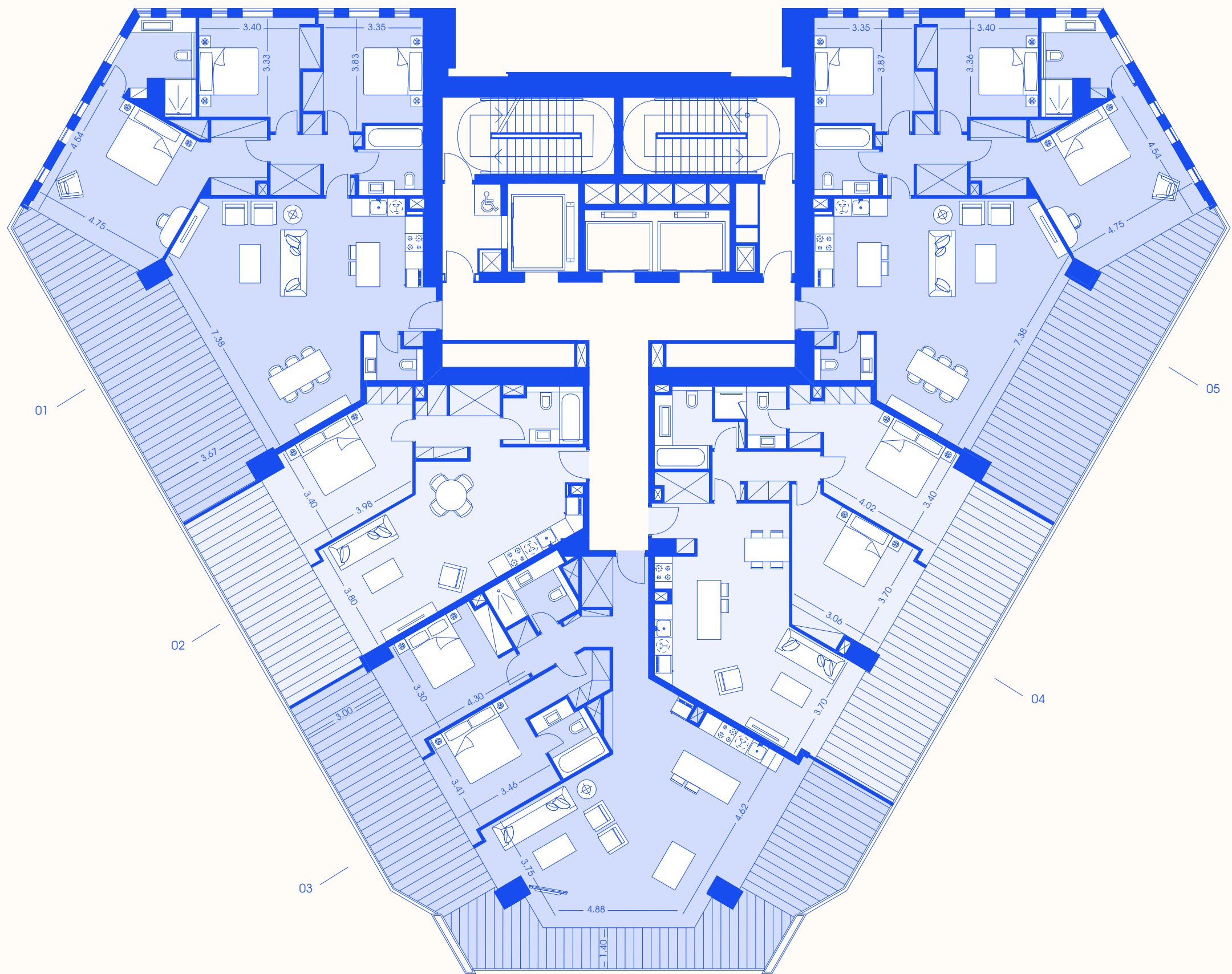
TOWER APARTMENTS

“The West Tower stands straight and proud on the south west corner of the Trilogy site. The cantilevered Sky Terrace and sharp angular cut lines define its unique profile and provide residents with a dramatic viewing platform.”

Hakim Khennouchi, Director, WKK Architects

APARTMENTS
Levels 20 – 24

WEST TOWER



Disclaimer:
Floorplans and dimensions displayed are
indicative and may vary from level to level.

APARTMENTS

Levels 25 – 28

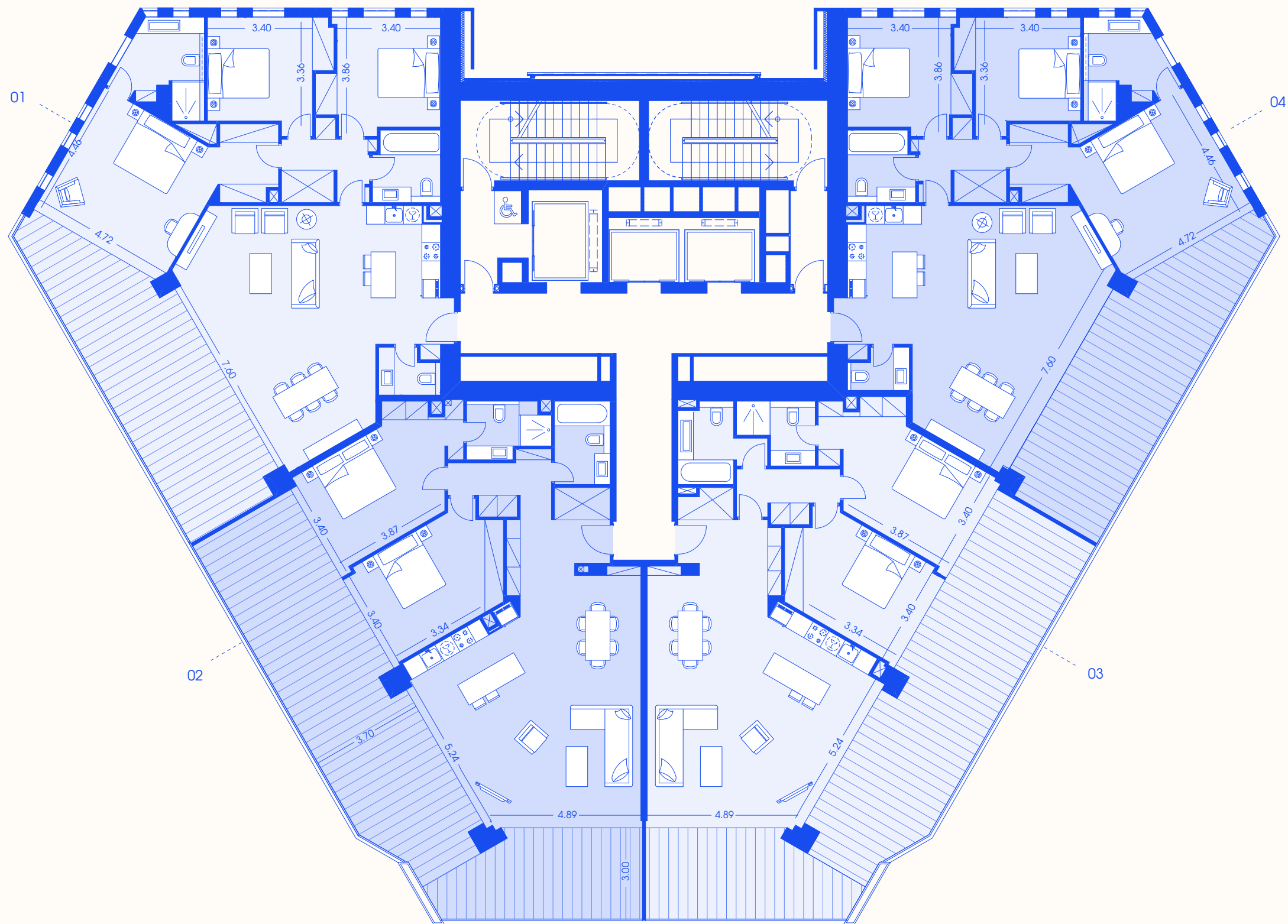
WEST TOWER



Disclaimer:
Floorplans and dimensions displayed are
indicative and may vary from level to level.

APARTMENTS
Levels 29 – 33

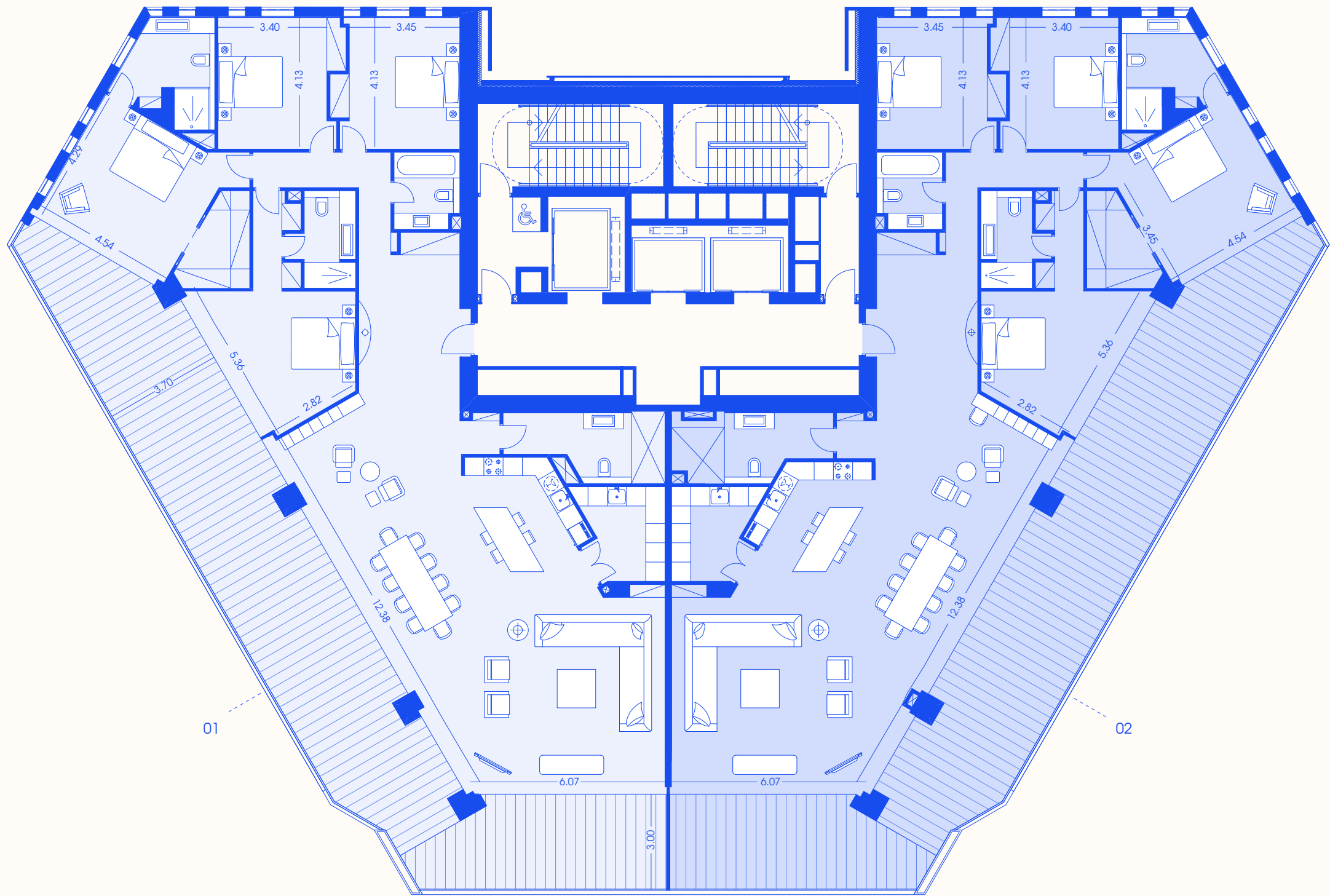
WEST TOWER



Disclaimer:
Floorplans and dimensions displayed are
indicative and may vary from level to level.

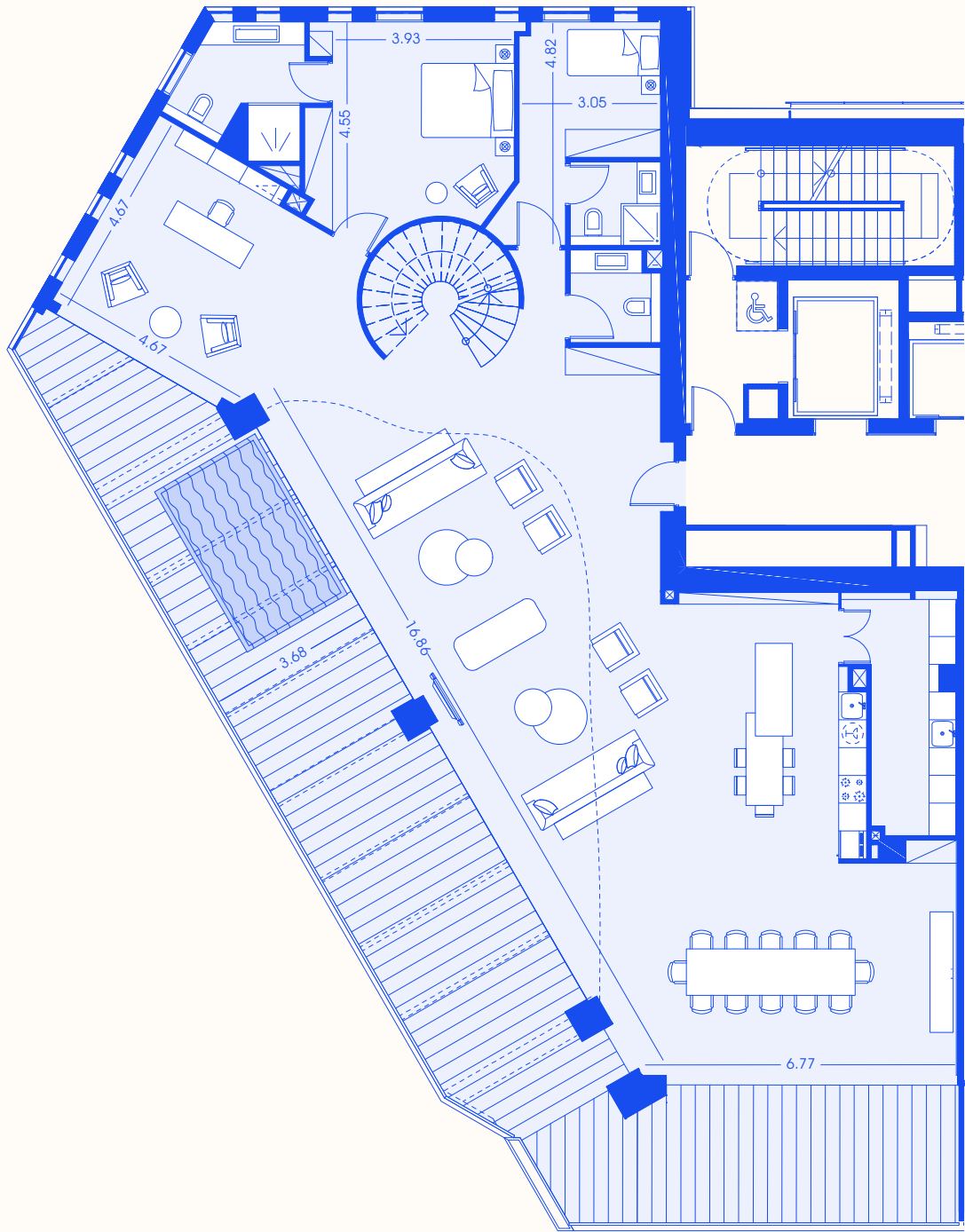
APARTMENTS
Levels 34 – 36

WEST TOWER



Disclaimer:
Floorplans and dimensions displayed are
indicative and may vary from level to level.

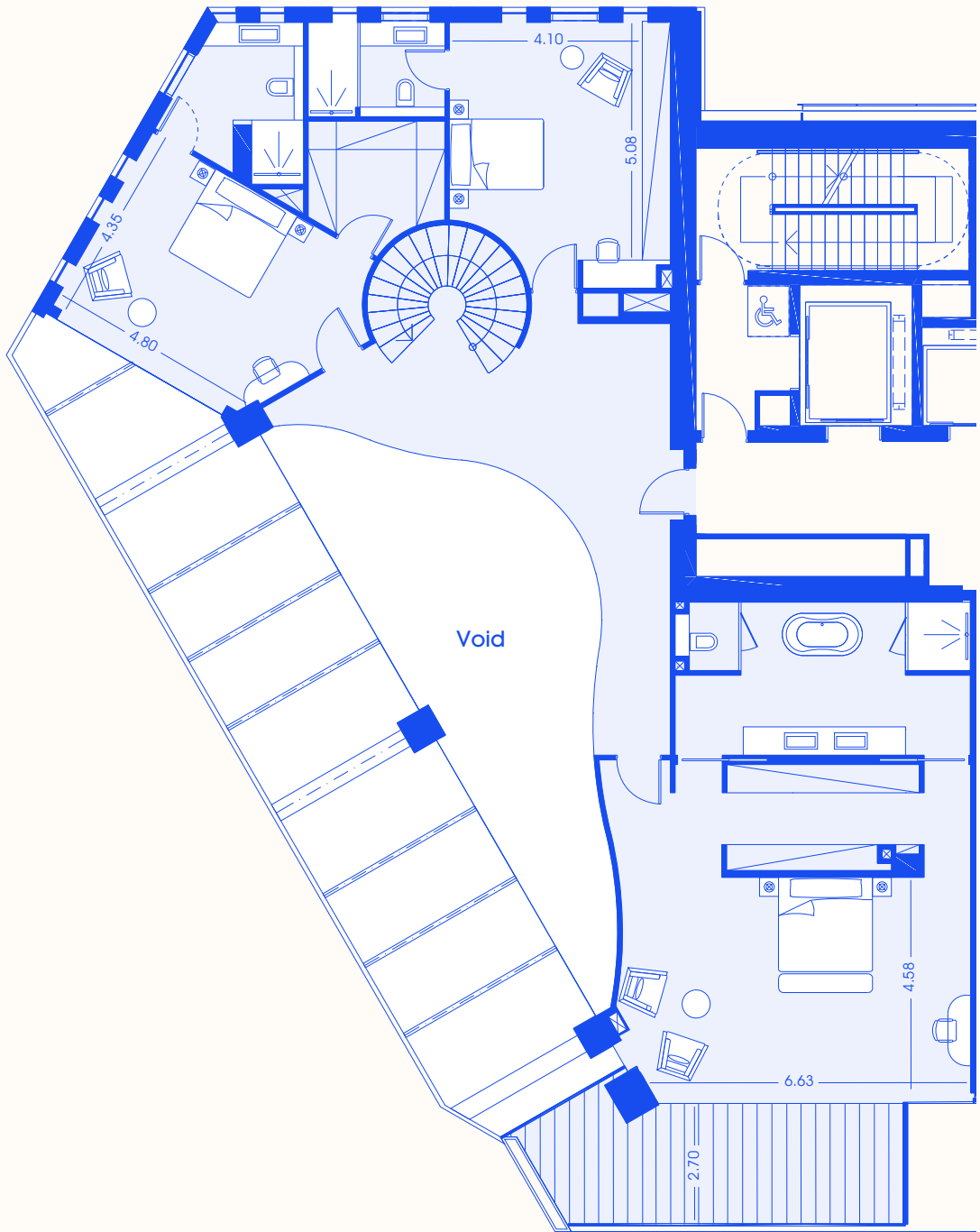
PENTHOUSE 3701
Level 37



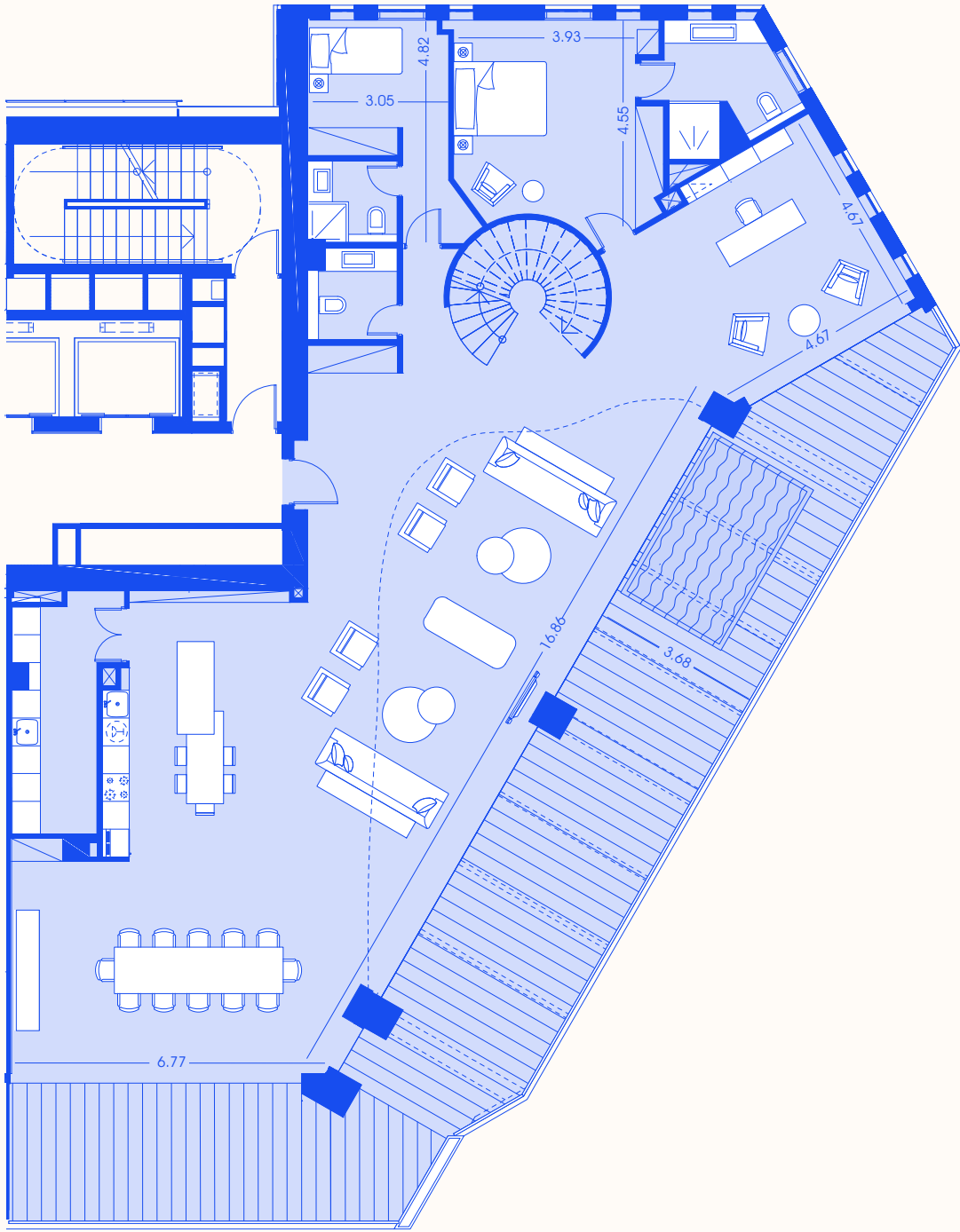
Disclaimer:
The position of the penthouse pool is indicative.

PENTHOUSE 3701
Level 38

WEST TOWER



PENTHOUSE 3702
Level 37



Disclaimer:
The position of the penthouse pool is indicative.

PENTHOUSE 3702
Level 38

WEST TOWER



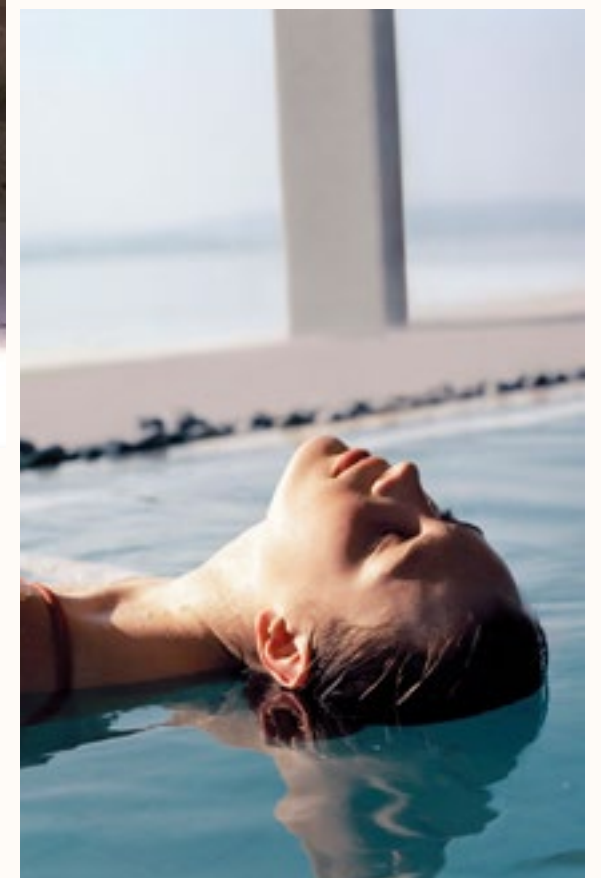


Trilogy Sky Terrace



YOUR PRIVATE RETREAT

Left: View out to the sea from the West Tower pool on the Sky Terrace.



PURE RELAXATION

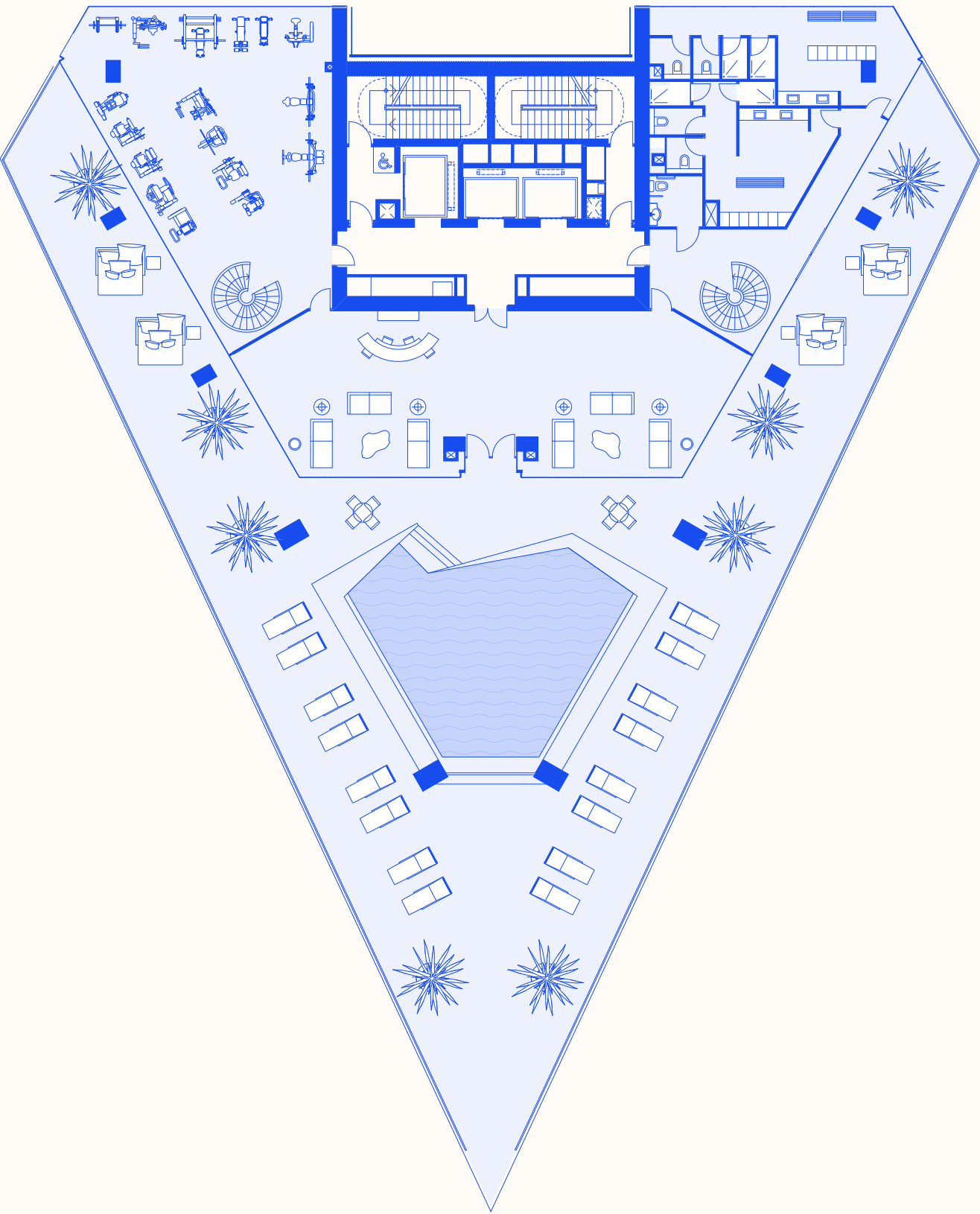
Elegant resident-only health, fitness and spa facilities occupy two floors of the West Tower, separating the mixed-use building's luxury apartments from the modern offices. The carefully designed double height space offers relaxation with unparalleled first-class services and outstanding views of the infinite horizon.

Lose yourself in the tranquillity of the tower's spa and lounge area, or revitalise in the fitness suite, before being mesmerised by the astounding views of the Mediterranean Sea from the exclusive Sky Terrace.

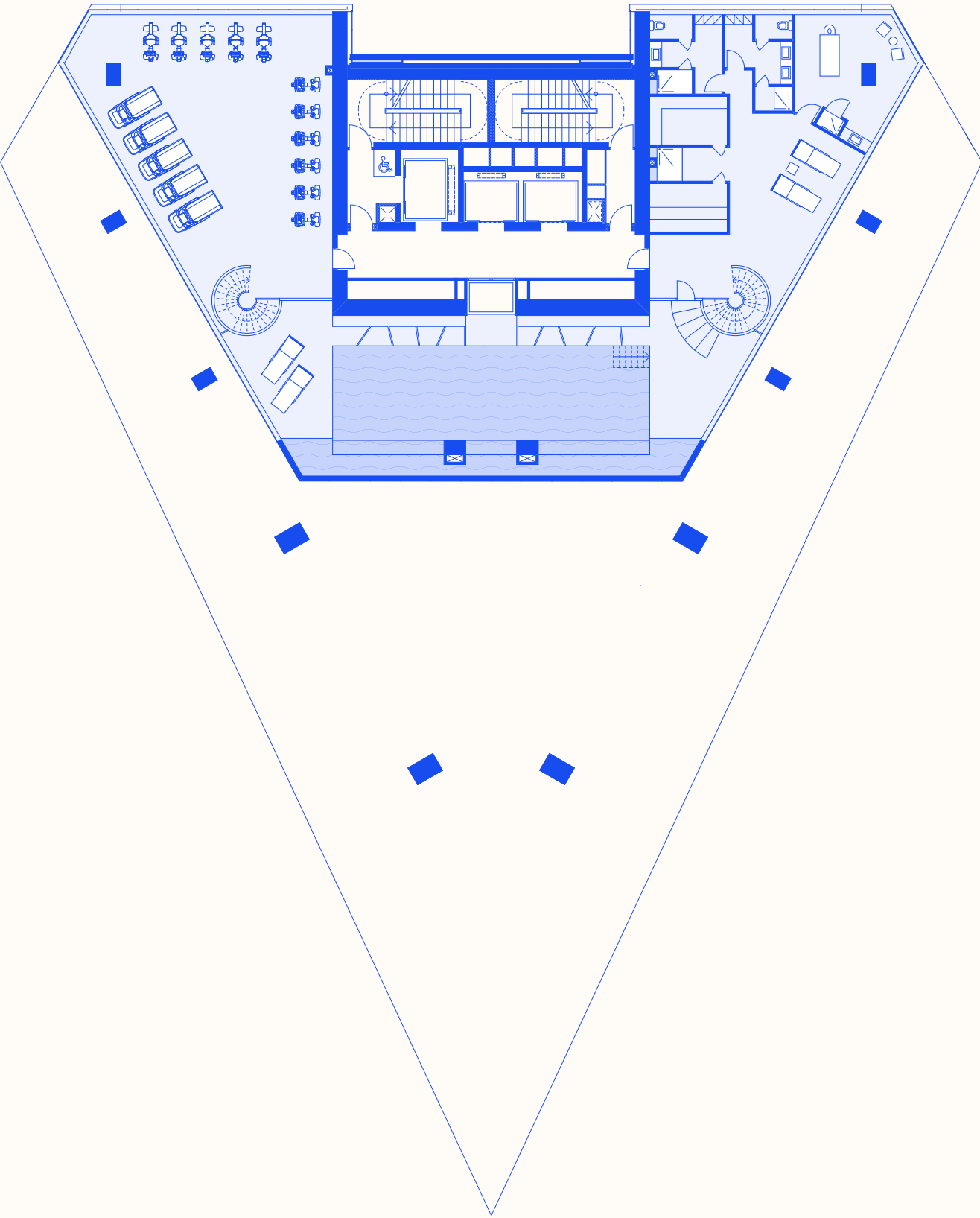
WEST TOWER RETREAT

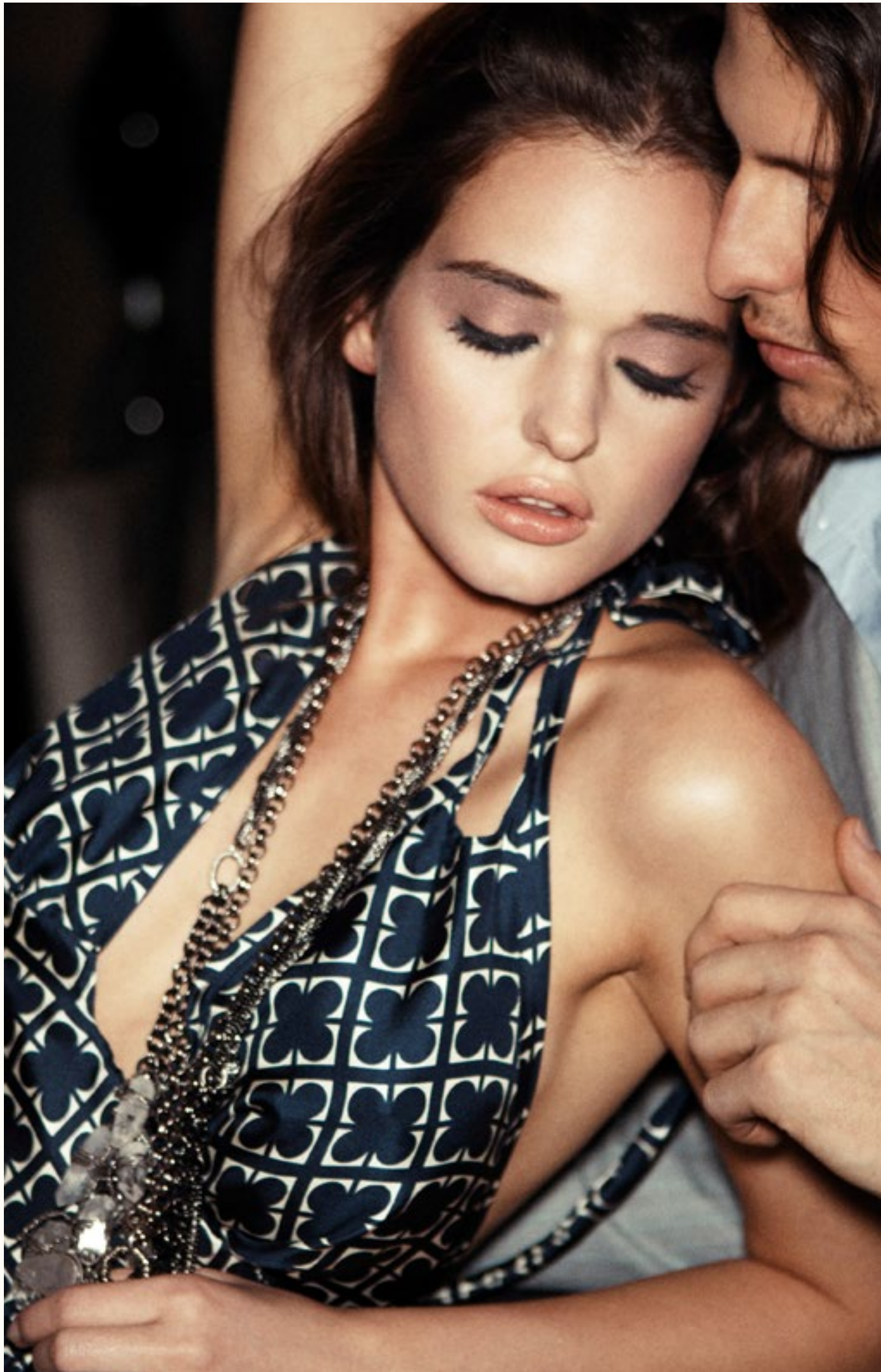
- Lounge area
- Gym
- Sauna
- Steam bath
- Treatment rooms
- Relaxation area
- Indoor swimming pool
- Outdoor swimming pool

RETREAT: SPA AND GYM
Level 17



Level 18





III

PLAY

*“Closing my eyes, I can almost taste the crisp wine,
rich foods and joyful laughter of the night ahead.”*

Trilogy has been just as thoughtfully considered on the outside. A breathtaking private pool, tennis court, children’s play area and tranquil gardens offer everyone a place to escape. And at the centre of it all, the beautiful plaza is home to fine restaurants, bars and shops: an inviting hub and the beating heart of this unique destination.

STEP INTO THE OASIS

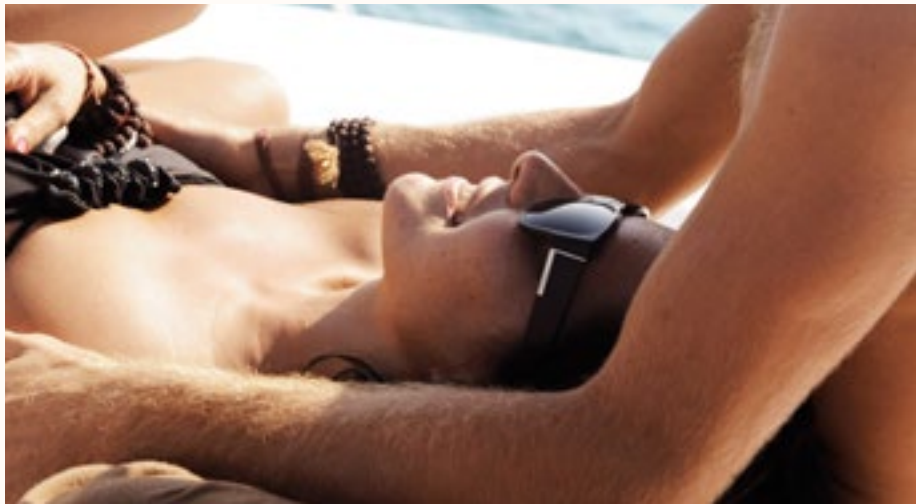
LIMASSOL'S PARADISE

The Oasis is a private resident-only sanctuary, cradled by all three towers, offering hours of relaxation or recreation under the clear blue sky. A fusion of tailor-made services and stunning outdoor facilities, create the perfect 'resort' experience just moments away from the city's seafront promenade.

Whether in the mood for a game of tennis, a lazy day in the sun, quality time with your family or a brisk walk along the beach, this is the place to unwind or re-energise.

PRIVATE OASIS

- *Swimming pools*
- *Pool bar*
- *Tennis court*
- *Children's play area*
- *Landscaped gardens*



Right: View out to the sea from the Oasis pool.





EMBRACE GLAMOUR

*Left: Tables ready to be seated
at one of Trilogy's fine restaurants.*



MORNING TO NIGHT

The Plaza is a bustling public space extending from the entrance of the development, to the centre of the two front towers. Restaurants, bars and shops combine to create a thriving hub that can be enjoyed by everyone, from dawn's first light to sundown and beyond.

Step out of your apartment or your office and catch up with family, friends or colleagues over a morning coffee, a light lunch, an early evening glass of wine and your favourite cuisine.

PUBLIC PLAZA

- Restaurants
- Cafés and bars
- Shops

TRILLOGY

LIMASSOL SEAFRONT